

SPRING TERM 2025

THE PGH NEWS

Rugby's Independent Adult Education Centre

Welcome back students!

At the start of the Spring term the weather has certainly been chilly but we are delighted to extend a warm welcome to all our students after the Christmas break. We are all looking forward to a new term of learning for fun in the friendly ambiance of the Guildhouse. As usual, we appreciate your consideration in staying at home if you are feeling unwell.

Financial Update

We are relieved and delighted to inform you that we have secured the immediate future of The Percival Guildhouse thanks to your generous support and our success in securing interest-free, long-term loans from Westham House Fund, our long-standing supporter, and from Rugby School. We are not out of the woods for the longer term so we continue to apply for grants but ultimately, our future security lies in our being able to attract more students. You can help! The more you talk about the Guildhouse and everything it means to you, encouraging others to join a course or attend a workshop, the more likely we are to be successful.

Christmas Fundraising



Now that all our aftersales have been counted, we have raised £1893.59 from our popular Christmas Fair fundraiser. We knew it would be a challenge to equal last year's bumper result but, despite a significantly reduced number of visitors to the Fair, this comes pretty close, so a big thank you to everyone involved.

This issue:

Welcome back students!

Financial Update

Christmas Fundraising

PAGE 1

It's our Centenary Year!

PAGE 2

Saturday Workshops:
Enrol Now!

PAGE 3

Dates for your Diary
New Course!

PAGE 4



It's our Centenary Year!

100

We have entered 2025, our Centenary year, and although the anniversary is not until September, we already have a number of events lined up throughout the year.

Cultural Events



French Wine & Cheese: 8 February



Italian Evening: June



German Evening: September

Centenary Brochure: May

Thanks to a grant, we have been able to commission a beautiful celebration of 100 years of the Percival Guildhouse in print.

Art Exhibition: June

Art classes will have the opportunity to showcase their work in a two-week Exhibition at Floor One Gallery (Rugby Museum and Art Gallery) 2 - 16 June. The approach to the Gallery will feature PGH archives 1925 - 2025.

Tea Party: July



Heritage Event: September

As part of the National Heritage Open Days Festival, PGH will host a Heritage Exhibition displaying PGH archive material from the last century as well as 100 years of textiles.

Collaborations with Rugby Theatre and local schools are also planned.

First Centenary Event

8 February 2025



To kick things off, the Guildhouse will be hosting a French-themed Wine & Cheese Evening starting at 7pm on Saturday 8 February in the Beresford Room. As well as an opportunity to sample a selection of French wines and cheeses, there will also be a quiz, live music and (of course, you guessed it!) a raffle.

Because of space limitations tickets will be sold on a strictly first-come-first-served basis with no more than 2 tickets per student. Tickets cost £25 from the office (01788 542467).

Any profits will be in support of the Guildhouse.





Saturday Workshops: Enrol now!

Most workshops will take place from 10am to 4pm

Saturday 1 February 2025

- Qigong Tai Chi



- An introduction to Modern Calligraphy for Beginners



- The Israel Palestine Conflict: How did we get here?



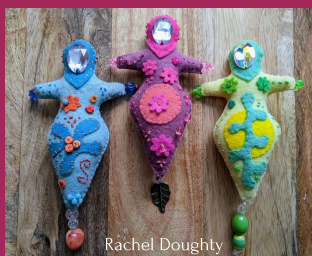
- Spanish Verbs (The Present)
- Introduction to Tracing your Family History
- Embroidery on Photographs



Saturday 1 March 2025

- Coloured Pencil Animals
- Family History - Next Steps

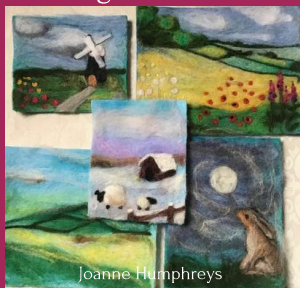
- Spirit Doll Making



- Clay Head Sculpture



- Needlefelting



- Ballet Hoo! And Why



Saturday 5 April 2025

- Life Drawing
- Delving Deeper into your Family History
- Introduction to Watercolour Painting



- Air Dry Clay Ornaments





Dates for your Diary

Spring Term 2025:

- Sat 25 Jan: Indulgence Day
- Sat 1 Feb: Workshops
- 17 - 21 Feb: Half term
- Sat 1 March: Workshops
- Sat 5 April: Workshops
- Mon 14 - Fri 20 April: Easter break, PGH closed



Summer Enrolment:

24 MARCH - 4 APRIL 2025

Current students - re-enrol now to keep your place!
New students - please enquire for vacancies

7 APRIL 2025 ONWARDS

Anyone can enrol if there is space

28 APRIL 2025

Summer Term begins

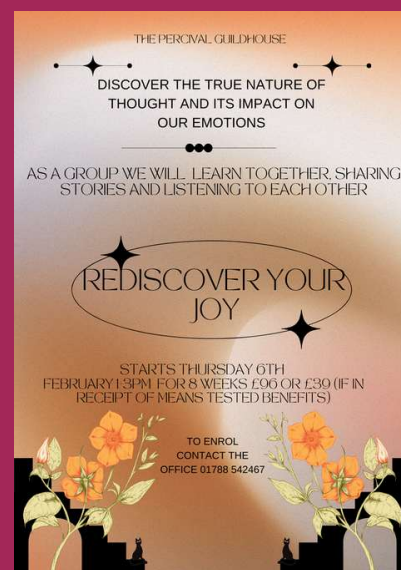


Summer Term 2025:

- Wed 23 April: Office opens
- Mon 28 April: Summer Term begins
- Mon 5 May: May Bank Holiday - no classes
- Sat May: Workshops
- 12 - 16 May: In-house Plant Sale
- 26 - 30 May: Half term
- Sat June: Workshops
- Tues 1 - Fri 4 July: Summer Workshops
- Mon 7 July: Summer Break, PGH closed

NEW COURSE!

'Rediscover Your Joy' has been added to the Spring programme.



Note the date

In-house Plant Sale

12 - 16 May 2025

Plant your seeds now to grow flowers and veg for the Guildhouse!

